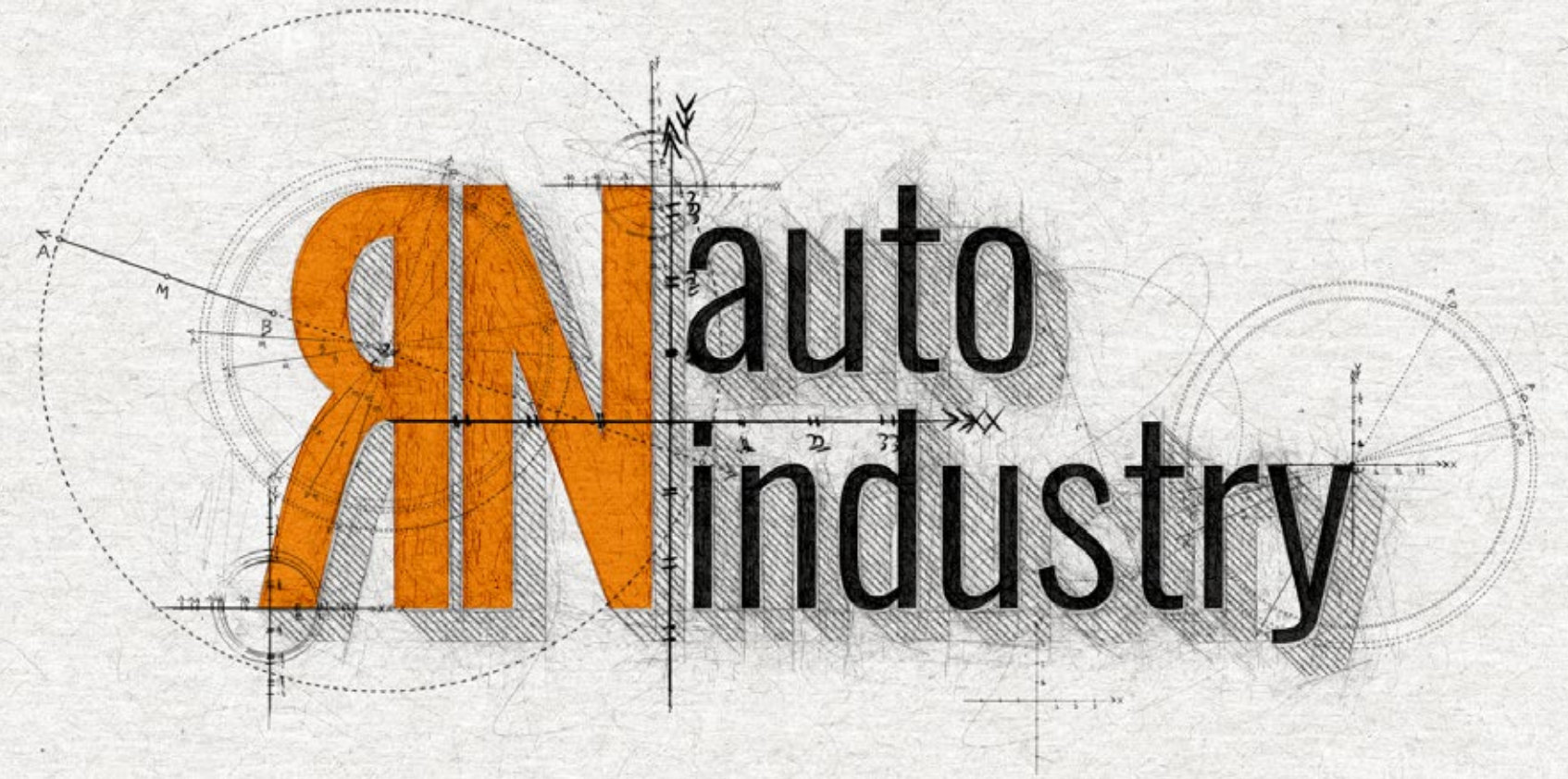




RN Auto Industry is everywhere in the world!

www.rnindustry.com



08

FIRETRUCK AND RES- CUE VEHICLE

- Firefighting Trucks
- Rescue & Rapid Intervention Vehicles
- Hydraulic Turntable Ladders

16

TANKERS

- Water Tankers
- Bitumen/Fuel Tankers

22

VACUUM&COMBINED TRUCKS

- Vacuum Trucks
- Combined Canal Jetting and Vacuum Trucks

28

GARBAGE TRANSFER EQUIPMENT

- Rear Garbage Compactors
- Top Crane Garbage Compactors
- Garbage Trailers
- Hooklifts
- Skip Loaders

40

TIPPER&TIPPER TRAILER

- Tippers
- Tipper Trailers

46

TRANSMIXER

- Transmixers 3 m3 – 14 m3

50

TRANSPORT TYPE TRAILER

- Container Carriers
- Refrigerator Box Trailers

56

MEDICAL VEHICLE

- Ambulances
- Military Type Ambulances
- Mobile Laboratories

64

SPECIAL VEHICLE

- Prisoner Transports
- Airopport Support Vehicles
- Mobile Bank

RN AUTO INDUSTRY IS EVERYWHERE IN THE WORLD

ABOUT US

We, RN INDUSTRY, are a manufacturing and supplying company located in Romania with facilities in Ankara, Istanbul, Mersin in Turkey and in Tirana, Albania. We are carrying on our activities as RN INDUSTRY over 22 years of experience.

We support our customers every step quickly and full heartedly: from receiving new orders, delivering goods to after sales services.

With our own follow-up system: receiving special orders, production processes, product deliveries and after-sales services, we exert our best effort to satisfy every customer's requirement and support your business running smoothly. By strengthening the coordination of our departments, every possible improvement provides appropriate solutions and are implemented for all customers to keep their orders safe and complete.

RN INDUSTRY is a manufacturer of all kinds of superstructures, providing innovative solutions to solve customer challenges. Since our establishment, we have developed and produced various Firetrucks and Rescue vehicles, Tanker, Vacuum and Combined trucks, Garbage trucks and many other types of transport.

To provide quality products, we participate in the customer's planning stage, and then carry out design, production control and after-sales service. RN INDUSTRY is advancing with up-to-date technology to satisfy various customers' needs by providing high quality, good effective, and environmentally friendly products at competitive cost.



FIRETRUCK AND RESCUE VEHICLE

Firefighting trucks, often referred to as fire trucks or fire engines, are specialized vehicles designed to respond to fires and other emergency situations. These vehicles are essential for fire departments and emergency services to effectively combat fires, provide rescue services, and manage various emergency scenarios.



FIREFIGHTING TRUCKS

Technical Specifications

- GVW
- Drive Train
- Power
- Cabin
- Material
- Water and Foam Tank Material
- Water Tank Capacity
- Foam Tank Capacity
- Fire Pump
- Foam Proportion
- Discharge Capability
- Rapid Intervention Hose Reel

Options

- From 8 ton to 46 ton
- From 4x2 to 6x6
- From 110 HP up to 330 HP
- Single Cabin/Double Cabin
- Steel and Aluminum frame
- Stainless Steel
- From 1000 to 8000 Lt
- From 100 to 500 Litres
- 3000 lpm @10 bar & 250 lpm @40 bar
- 3%-6% Manual Around the Pump Foam Proportion
- 2400 lpm @7 bar, 60 Meters



RESCUE AND RAPID INTERVENTION VEHICLE

Technical Specifications

- GVW
- Drive Train
- Power
- Cabin
- Superstructure
- Water and Foam Tank Material
- Water Tank Capacity
- Foam Tank Capacity
- Fire Pump
- Foam Proportion
- DCP
- Hose Reels

Options

- From 3.5 to 46 ton
- 4x2/4x4
- From 120 HP Up to 270 HP
- Single or Double Cabin
- Made from Aluminum Frame
- GRP or Stainless Steel
- Up to 1200 Litres
- Up to 300 Litres
- High-Pressure Firefighting System 42 lpm @100 bar
- 0%-6%
- Up to 60 kg
- Electrical and Manual Up to 50 meters, DCP and High-Pressure Firefighting System Hose Reels





HYDRAULIC TURNTABLE LADDERS

Technical Specifications

- GVW
- Drive Train
- Power
- Cabin
- Rescue Height
- Cage Capacity
- Outriggers
- Fire Pump
- Platform Controllers
- Water and Foam Tank Material
- Pipeline
- Water Tank Capacity
- Foam Tank Capacity
- Cage Monitor

Options

- 18-33 tons based on the requirements
- 4x2/6x2/6x4
- From 280 HP up to 360 HP
- Single
- From 18 meters up to 32 meters
- 300 Kg
- H Type Outriggers
- 3000 lpm @10 bar
- From Cage and Main Control Panel
- Stainless Steel
- Aluminum Telescopic Pipeline
- Up to 2000 Litres (It will be determined according to the capacity of the ladder)
- Electrical Up to 3500 lpm @7 bar





TANKERS

Our tankers, are specialized vehicle designed for transporting and delivering large quantities of water and fuel. These trucks are commonly used in various industries including firefighting, construction, agriculture, and municipal. Water/fuel tanker trucks come in various sizes with different tank capacities, ranging from a few hundred gallons to several thousand gallons. The tank material is typically made of steel, aluminum, or fiberglass.



WATER TANKERS

- Water tanker is designed to carry and transfer water with either road cleaning purposes or to distribute potable (drinkable) water. It can be elliptical, cylindrical, D shape.
- Tank is made of sheet metal or stainless steel.
- Tank chassis is mounted on the real chassis with flexible connections as per the truck chassis manufacturer's bodybuilder instructions.
- There is a manhole on the top of the tank (500mm diameter)
- There are sufficient amount of baffles to prevent any overflow during transportation.
- Ventilation unit supports releasing of excess air and water inside.
- Tanker has water level indicator.
- For the easy access to the top pool and manhole, ladder is mounted on the side or the rear part of the superstructure.
- Centrifugal Type Water Pump that has suitable capacity accordingly with the tank capacity is driven by truck's PTO that is controlled from the cab or with Moto Pump.
- Tank can be filled by gravity from the top opening or filling tank from outsources by suction hoses is possible.
- At most suitable place, hose reel is mounted.
- Different Accessories

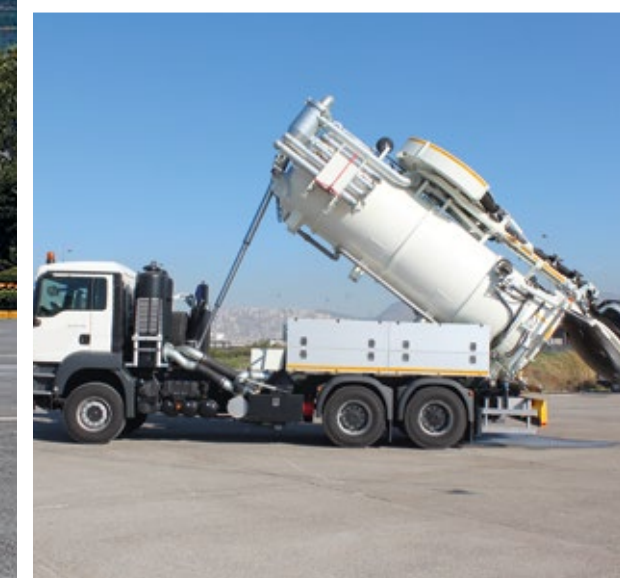




BITUMEN / FUEL TANKERS

- Type: Fuel Tanker
- Tank Capacity : 3000 lt. - 20.000 lt.
- Tank Material : ST 37, ST-52 Steel
- Tank section : It can be produced as Ecliptic or D Shape
- Fuel Tanker Installation:
- With suitable capacitated fuel pump
- 30 mt - 40 mt hose reel
- Fuel Tanker Accesories:
- Mudguard
- Safety bars
- Hose and nozzle gun
- Tool Box
- Earthing Chain
- Fuel Tanker Trailer
- Type: Fuel Tanker Trailer
- Tank Capacity :28.000 lt. - 40.000 lt.
- Bottom filling and discharge system equipments, Pressure safety vents, Manholes with sealing gaskets.





VACUUM & COMBINED TRUCKS

Our vacuum and Combined truck and , are specialized vehicle designed to remove and transport various types of liquids, sludge, solids, and debris by creating a vacuum within its tank or container. Vacuum trucks are commonly used in industrial, municipal, and environmental applications to handle waste, clean out sewers, perform oil and gas industry tasks, and tackle a range of other jobs.



VACUUM TRUCKS

- Tank Capacity: From 5.000 To 20.000 Lt
- Powertrain: Gearbox + Belt Pulley System + Shaft
- Vacuum Pump Capacity: From 400 M³/ H - 1600 M³/ H To 92% Efficiency
- Tank Lift Angle: 2° Fixed Tank
- Waste Water Tank Rear Cover: 4 Pieces Of Locking With Flywheel Locking System Tank Wide Rear Cover That Can Be Opened 80°-90° (Degrees) With Double Piston On Vertical Axis
- Suction Valve: 4" Manual Gate (Knife) Type Valve
- Drain Valve: 6" Pneumatic Gate (Knife) Type Valve
- Other Options: Manhole Cover Lifting Crane, Tank Chassis Pneumatic Lock System, Remote Control System, Digital Display, Damper Covering, Automatic Grease System, Heated Hand Washing Tank, Deodorizing Filter System, Webasto System, Cabinet





COMBINED CANAL JETTING AND VACUUM TRUCKS

- Tank Capacity: from 10.000 to 20.000 lt
- Powertrain: Vertical Gearbox + Clutch System + Belt Pulley System
- Vacuum Pump Capacity: 92% Efficiency - 4100 m³/h - 2500 rpm or more
- High Pressure Water Pump Capacity: 170 bar - 413 lt/min or more
- Suction Boom System: 6" 15 Meter CD-BOM
- Main Drum Hose: 1" 120 meters, 180° Rotatable Hydraulic Driven
- Auxiliary Drum Hose: ½" 60 meters Hydraulic Driven
- Tank Lift Angle: 40°
- Waste Water Tank Rear Cover: Locking with 4 Hydraulic Piston Locking System Tank Wide Rear Cover that Can Be Opened 80°-90° (Degrees) with Double Pistons on the Vertical Axis
- Suction valve: 4" Pneumatic Gate (Knife) Type Valve
- Drain valve: 6" Pneumatic Gate (Knife) Type Valve
- Other Options: Manhole Cover Lifting Crane, Tank Chassis Pneumatic Lock System, Remote Control System, Digital Display, Damper Covering, Automatic Grease System, Heated Hand Washing Tank, Deodorizing Filter System, Webasto System, Cabinet





GARBAGE TRANSFER EQUIPMENTS

Garbage Transfer Equipment's are a type of garbage truck specifically designed for the collection and compaction of solid waste from residential, commercial, and industrial areas. These trucks are commonly used in urban and suburban waste management operations. The key feature of a rear garbage compactor is its hydraulic compaction system located at the rear of the vehicle. Here are some important features and characteristics of rear garbage compactors.



REAR GARBAGE COMPACTORS

- Capacity from 3 to 22 m³ garbage compactor
- Material from steel st 52 to hardox
- Without any U-profiles or any traverses on body side.
- Compaction plate Single plate ,Area that get into contact with garbage friction,pressure from ST 52 steel quality.
- Ejector(discharging) plate Tailgate (hopper)
- The compaction ratio (volumetric) varies between 4:1 - 6:1 according to the characteristic of the garbage used in the area.
- Hopper Capacity from 1 m³ to 2 m³
- The tailgate raise is achieved by two double acting hydraulic cylinders
- Safety Props
- Devices Suitable to lift 1100liter (1.1m³) metal + 1100 liter (1.1m³) OSCHNER type + 1700 liter (1.7 m³)
- 120 - 240 - 360 - 1100litre plastic containers;
- Plastic Containers teethes are mounted on the 1.1m³ lifter arms.
- System can be operated electrically.
- The system is controlled from the control box, which enables, start, stop, emergency button on both sides, continuous cycles, driver comm., and rescue activities.
- Comm. Buzzer To warn or contact to the driver
- Oil Tank Capacity
- 9 units of hydraulic cylinders
- Rear Camera + monitor





TOP CRANE GARBAGE COMPACTORS

- Body Volume : from 15 to 25 m³
- Material from st 52 to hardox
- Extra Hopper/Storage Capacity: from 1,5 to 2 m³
- Body is reinforced with braces and mounted on chassis with flexible mounting elements.
- Telescopic cylinder.
- Bin lifting system DIN standard 120, 240LT & 1100 lt. capacity
- Two safety bars will be given to be used during maintenance.
- Hydraulic System
- There are two operation control systems.
- Single continuous switch, emergency stop

- button, driver's signal and engine accelerator.
- Opening of tailgate and rear/forward movement of push out plate are done manually with a
- two spool directional valve which is mounted on front side of the body. Sledge-Shovel
- Hopper Automatic Cycle
- Rescue button
- Emergency stop
- Tailgate can be controlled from driver cabin
- Ejection plate
- Rear View Camera
- Top crane from different brand and capacity





GARBAGE TRAILERS

- From 45 m² to 70 m³ capacity
- 3 axles
- ABS system
- ADR- Electrical equipemnt
- TRS (BRS) anti-tilt system
- Air brakes
- Air suspension
- 1st lifting axle
- 2 mechanical supports
- Electrical connection: 1x15 pole in accordance with ISO 12098
- Saddle plate 2 "(king pin)
- Semi-trailer construction waterproof, protected against corrosion and wear
- Floor semi-trailers made of sheet steel or Hardox
- Anti-corrosion protected with reinforcements
- Integrated leachate tank with grate for

separating solid and liquid phases, volume 300l

- Thrust plate 3mm thick, front part of the plate made of special steel HB 400, wear-resistant
- Hydraulic pumps: 2 (two) independent hydraulic pumps, working pressure 200 bar
- Independent diesel engine, with noise protection, built into the chassis of the semi-trailer in the lower part
- 24 V electrical installation
- Oil tank, volume 180l, located in the chassis of the semi-trailer
- 35l diesel fuel tank located in the chassis of the semi-trailer
- Hydraulic installation of cylinders without flexible hoses
- Independent operation of the pressure plate and auxiliary operations



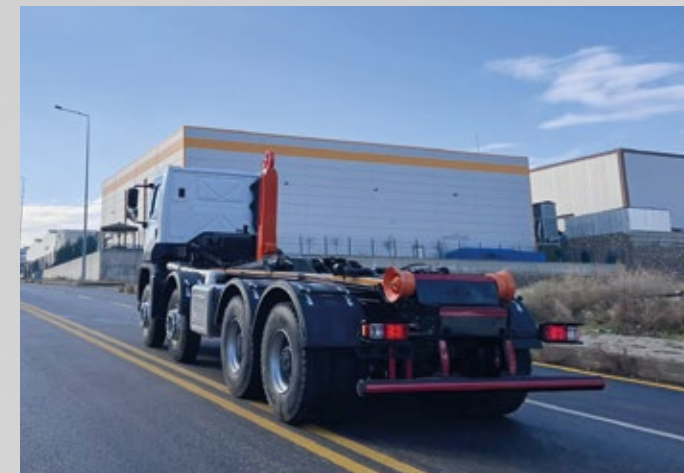


HOOKLIFTS

- From 3.5 ton to 30 ton hooklift capacity
- Main Boom St-52(S355JR) / 14mm
- Boom Housing St-52(S355JR) / 14mm
- Hook Boom St-52(S355JR) / 14mm
- Chassis St-52(S355JR) / 8mm
- Hydraulic Command 3/4" block – 120litre/min.
- Hydraulic Cylinder Bore: The dimensions of the cylinders are designed to realize the prescribed cycle times and compression ratio. It complies with DIN 2391 C Norms.
- Hydraulic Oil Pump : 68-85litre/minute, 1000 rpm – PTO Activated
- Control System: Manual system
- Hydraulic Valve: Well quality Turkish origin
- Hydraulic Oil Tank: Equipped with return filter,

tank lid and oil indicator.

- P.T.O.: Controlled inside the cab, original P.T.O of the Truck
- Painting: All steel parts surface free of rust and oil residue by sand blasting, then will be applied with two primers, completely final painted according to desired color / RAL code
- Ladder: One piece located in right side of the truck
- Stop Light: 2 units
- Tool box: 1 unit
- Stabilizer Leg: 2 Hydraulic Cylinder connected to a rollerv





SKIP LOADERS

- Lifting Capacity from 8 to 16 ton 12 tones
- Container Capacity (m3) Proper to load&unload 5 – 12m3
- Steel Thickness Floor 4-6 mm St-52
- Sub frame "U" shape full length 6 mm St-52
- Control Manual + electrical system Truck engine r.p.m. Should be arranged between minimum 1100 dev./min. and maximum 1500 rpm/min.
- P.T.O. Original of the truck chassis.
- Cycle App. 100 (+20) seconds (Lifting +locking +tilting/unloading)
- Loading Height Approximately 1250mm. from ground
- Pump P.T.O driven Hydraulic Gear Pump between 73-90 cm3 origin Gear Pump. Exact capacity Depends on truck rpm(cc./minute)
- Working Pressure (bar) 160-180 bar ((+20 bar) depends o truck P.T.O. and hydraulic pump.
- Hydraulic Cylinders: 4 units of hydraulic cylinders + 1 unit pneumatic cylinder. Miles grinded, pipes honed, and hard chrome coated (2 units for standard arms and 2 units cylinder for stabilizing jacks which are hydraulic And 1 unit pneumatic for container locking)
- Painting: All steel parts surfaces free of rust, will be applied with one primer, and two finishing paint coating in color of demand.
- General Two plastic mudguards with rubber flaps at rear ends.
- Electrical system is separated from the circuit of the truck





TIPPER&TIPPER TRAILERS

Tipper&Tipper trailers, are specialized vehicle designed for the transportation and unloading of bulk materials, such as sand, gravel, soil, construction debris, and other loose materials. These trucks and trailers are commonly used in construction, mining, agriculture, and various industries that involve the movement of heavy materials.



TIPPERS

- Load capacity: 10 – 20m³
- Material: FE510, thickness of steel: floor – 8 mm, walls – 4 mm
- Side walls fixed and reinforced with stamped ribs
- Rear part reinforced by welded uprights
- Fixed front gate with protective lid and spare wheel winch
- Rear gate at mechanical automatic release
- Lifting hydraulic cylinder in front position
- Pneumatic control of tipping/ lowering of the

body mounted in the cabin

- Tool box
- Rear steel mudguards
- Rear reflecting panels
- Painting cycle:
 - Sandblasting by means of computerized system;
 - Application of acrylic primer and finishing water enamel in Your color RAL





TIPPERS TRAILERS

- Semi Tipper Trailer Technical specifications
- Capacity: 20 m³ – 60 m³
- Types: 2 Axles, 3 Axles, 4 Axles. Semi Tipper Trailer “Pool Type-Half Pipe”, “Box Type”, “Scrap Tipper Semi Trailer”
- Weight (Empty): 5700 Kg – 9500 Kg
- Tipper Chassis Axles: 12 tons or 9 tons
- General used Tires : 385/65 R 22,5” or Double 12R22,5
- Tipper Trailer Chassis Material: Material quality standart is S355J2+N, optional MC 700
- Tipper Box Material: Base 4 mm HB 450 (Brinell Hardness Value: 450, Abrasion Resistant Steel), Side 4 mm HB 450 materials or request and are manufactured in accordance with the thickness value. Also Tipper Semitrailer addition steel 4 mm
- 5 mm support is S355J2+N.
- Semi Trailer Brake: Brakes system is used according to the standards EEC 97/12, double-circuit pneumatic
- Box Back Cover: Mechanical open or hydraulic.
- Trailer Electric Installation: The used Installation materials conform to the EEC 24 Certified European norms.
- Lifting Foot: OMS, SAF or JOST brand 2x24 tones two cyclet lacklift system.
- King Pin: 2” or 3,5” flanged bolts, resistant to high degrees of tension brakes, produced from forged steel. Easy to change thanks to screw connections. E Certified. new tipper trailers for sale





TRANSMIXERS

Transmixers are manufactured as both dry and wet systems under the defined capacity. In the equipment, there is a manual discharge chamber which works under the mechanical systems. This, the discharge application can be made to the desired point neatly. Movement of drum works mechanically with a mono roller systems.



TRANSMIXERS

3m³-14m³

- You Can Find 12m³ Transmixer Technical Specifications Below:
- Mixing Drumm: 4 Mm S 500/4 Mm 30 Mm B5
- Nominal Capacity: 19600
- Geometric Capacity: 19.600
- Filling Capacity: 64%
- Loading Wideness: 2.350mm
- Height: 2.750mm
- Weight: 4.600kg
- Reducer: Transmital / Zf
- Hydraulic Pump: Hidrosila / Eaton / Rexroth
- Hydraulic Motor: Hydrosila / Eaton / Rexroth
- Cooler: Akg 24v(18lt)
- Water Pump: Rpm / 500 With Driwing From Reducer
- Mixing Helix: 4 Mm 30 Mn B5
- Control System: Mixer Control Block Can Be Adjusted Between
- Additional Chutes: 5 Mm Plastic Gutter





TRANSPORT TYPE TRAILERS

Our trailers are specialized trailer designed for transporting standard shipping containers over long distances and transporting goods that need to be protected from the elements but still require easy access for loading and unloading. These trailers are commonly used in the logistics and transportation industry to move containers between ports, rail yards, and distribution centers. Container carrier trailers are crucial in global trade, providing a means to efficiently transport goods.



CONTAINER CARRIERS

- Dimensions : Length : 12.200 mm Width : 2.500 mm Wheel base : 8.140 mm
- Chassis : Its made from ST-52 and high resistant "I" cut chassis. 8 mm thickness chassis up and down 14 mm width for the 14 mm 120 mm
- Axles : 3 axles with TUV certificate. 1st axle lifting and valve for operation of lifting axle
- Suspension : Air suspension on the 3 axles
- Air system : WABCO with EBS
- Shock absorber
- Brake Adjusters : Automatic brake adjusters
- King-pin : JOST brand 2" with its protection cover
- Landing Legs : 24 ton double speed mechanic landing legs and it has TUV certificate. Air spring heavy duty type 150X150
- Twist locks : 12 units twist lock and they have TUV certificate. 12 units twist locks for 1 unit 40" container or 2X20" container or 1X20" container on the middle of container chassis. Twist locks' places painted and pins will be galvanized to be seen at night.
- Wheel and tyres : 385 65 R 22.5 Bridgestone brand 7 units tyres and rims with TUV certificate
- Electrical System : 24 V electrical system with side lamps led every 2.5 Meter – It has ADR certificate
- Connectors 15 and 7 pin – 2 unit stop lamp by 7 functionally shall be covered with cage installed by bolts.
- 2 units import plate illumination lamp
- Reflectors and velocity plates (European type)
- Paint : Epoxy and paint with RAL code of customer choice and accessories will be with RAL number





REFRIGERATOR BOX TRAILERS

- Side Walls 65 mm
- Front Wall 85 mm
- Back Doors 85 mm
- Roof 85 mm
- Floor 125 mm
- Chassis Neck 50 mm
- Wheel Base 7680 mm
- Maximum Length 13600 mm
- Minimum Length 13350 mm
- Overall Width 2600 mm
- Internal Width 2470 mm
- Overall Height 4030 mm
- Internal Height 2600 mm
- Axles Distance 1320 mm
- King Pin Load - Axles Load - Total Load 12000 - 27000 - 39000 kg
- Tare Weight (Without Cooling Unit) 8800 kg
- King Pin Load - Axles Load - Total Load 12000 - 24000 - 36000 kg
- Tare Weight (Without Cooling Unit) 7300 kg





MEDICAL VEHICLES

Medical vehicles play a crucial role in healthcare system by providing on-the-go medical services, transporting patients, and delivering medical supplies. These vehicles are specially designed and equipped to meet the unique requirements of medical emergencies, patient transport, and mobile healthcare services. We have several types of medical vehicles commonly used in the healthcare industry.



AMBULANCES

- Type A1 Transport Ambulance (TS EN1789+A2) Details For Technical and Medical
- Abs left-right side and ceiling pannels, Defibrillator, Central Oxygen, System and tubes
- Medical material and medicine and Electrical control panel compartments
- Seperator cabinet drawer rails, ABS seperator cabinet-top bench, doctor and nurse chair
- Sliding door glass installation, Air conditioner, Diesel type cabin heater, Turbofan ventiling, Roof, side and front panel floor coating
- Floor antibacterial pvc coating (plywood)
- 1000w 12v to 220v inverter, Ceiling led lamps, Extra 105Ah battery, Manual control panel system, 12v/ 220v electric sockets, Front-rear beacon lamp (with light barloudspeaker)
- Side box light and siren announcer, Fire extinguisher, Reflective external writings, Ceiling type hand holder, Ceiling type serum hangers, Fix type ambulance main stretcher (10G crash test)
- Scoop stretcher, Spineboard stretcher, Vacum stretcher, Fixed spyghonometer and stethoscope
- Disposable kit, Medical bag, Automatic suction machine, Defibrillator with AED





MILITARY TYPE AMBULANCES

- Type B Emergency Ambulance(TS EN1789+A2) Details For Technical and Medical
- Abs left-right side and ceiling pannels.
- Defibrillator, Central Oxygen System and tubes
- Medical material and medicine and Electrical control panel compartments
- Seperator cabinet drawer rails, ABS seperator cabinet-top bench, doctor chair
- Roof, side and front panel floor coating
- Floor antibacterial pvc coating (plywood)
- 1000w 12v to 220v inverter, Ceiling led lamps, Extra 105Ah battery, Touchscreen control panel system, 12v/ 220v electric sockets, Front-rear beacon lamp (with light barloudspeaker)
- Side box light and siren announcer, Fire extinguisher, Reflective external writings, Ceiling type hand holder, Ceiling type serum hangers, Fix type ambulance main stretcher (10G crash test)
- Scoop stretcher, Spineboard stretcher, Vacum stretcher,Fixed spyghonometer and stethoscope
- Disposable kit, Medical bag, Automatic suction machine, Defibrillator with monitor, Transport ventilator, Laryngoscope set, Ambu set





MOBILE LABORATORIES

- Protection grilles for front and rear lights
- Partition wall between lab and drive bays
- Insulation, coating and ventilation
- Insulation, cladding and ventilation
- Sidewall lining (aluminum composite material)
- Autonomous air conditioning for the laboratory space
- Turbo fan, Furniture, High cabinets, Work surface
- Stainless steel sink with electric pump and tap for clean and distilled water
- Tank for clean water 100 liter
- Distilled water tank
- 12v and 220v sockets, Led interior lighting led spots, External 220V input, extension cord, Battery Rectifier, General circuit breaker, 12V-220V converter inverter 2000w
- Standardized connection with ball joint and 7-pin plug





SPECIAL VEHICLE

The term Special vehicle is often used to describe vehicles that are customized or adapted for particular functions beyond typical transportation. We have different variety of Special vehicle designed for specific purposes.



PRISIONER TRANSPORTS

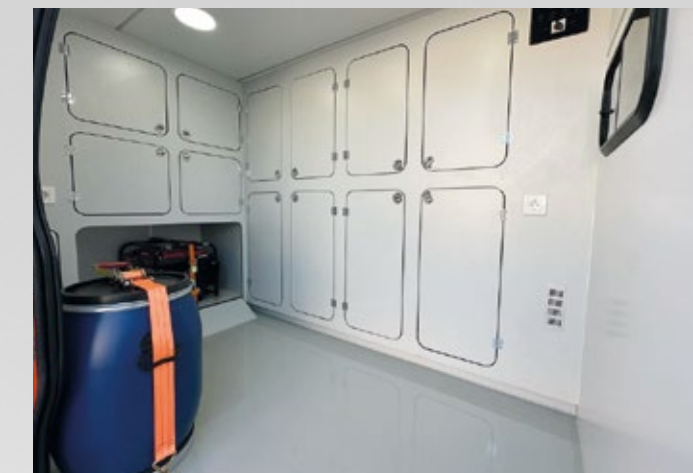
- Structure fixed to frame and original shield by brackets, high strength bolts and welding
- Exterior surfaces are coated with aluminum sheet metal
- Marine plywood floor is covered with aluminum sheet checker plate.
- Heat and sound insulation of roof and sides
- Intercom and video communication between cabin and passenger area
- Built-in led lighting with white and blue night light
- Fixed seats, with 3-point seat belt, in blue, with side armrests in aisle
- 6 kg fire extinguisher in the passenger compartment
- First aid kit in the passenger compartment
- Rear AC system type air conditioner
- Passenger cabin interior there will be left and right and double air ducts on the upper side.
- Individual storage for officers and storage for larger items (riot shields, gas masks)
- The light will come on in the driver's cabin when the door is opened, or the door is not closed sufficiently.
- Rear view camera (behind the equipment) camera in the passenger compartment
- All glasses to be used in the equipment will be suitable for the automotive industry and will be certified
- Installed Radio, antenna, intercom
- Heavy duty front and rear bumper
- Protective grids on all win





AIROPORT SUPPORT VEHICLES

- Airport runway/apron ground lighting maintenance repair vehicle
- Airport hazmat vehicle
- Airport wildlife guard vehicle
- Specially designed for supporting units to be used at the airport.
- Project-specific storage areas and work units made of composite and aluminum materials
- Special interior and floor coatings with antebacterial features that can be washed and cleaned easily
- External 220V input
- Internal 12V DC, 220V AC system and battery system
- 5~7.5 KWA generator
- Light warning, siren announcement system
- Outdoor lighting projectors
- Sink, clean/grey water tanks
- Safe seats for transportation of employee during travel
- Ground services, center and command control system and communication system
- Transfer of instant vehicle information to the center with telemetry system

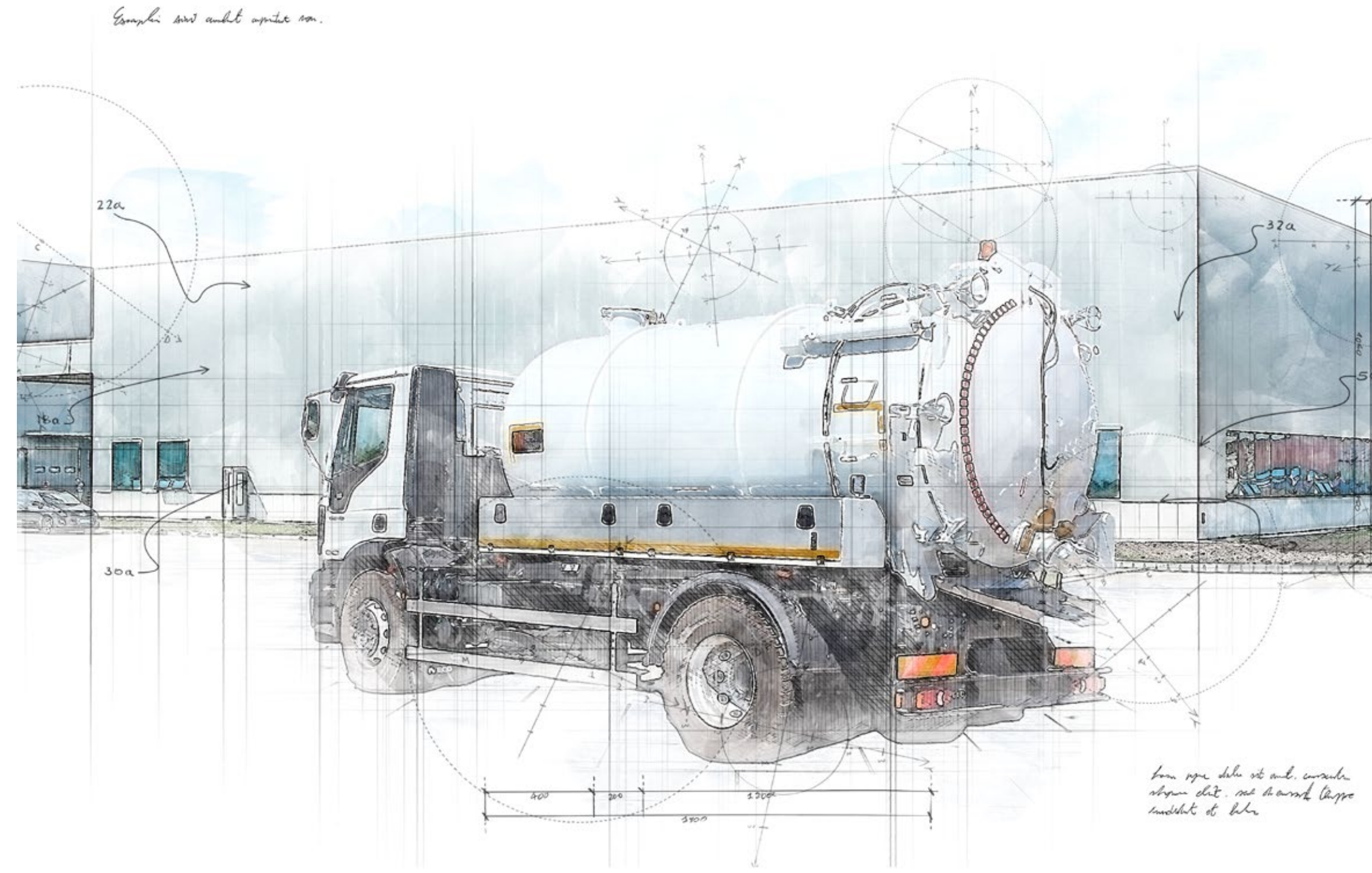




MOBILE BANK

- GVW: from 10.000 to 18.000 kg
- Body constructions will be manufactured from NPU140 box profile
- FLOOR 80 mm sandwich panel with steel construction.
- 218 mm marine type plywood, PVC floor covering
- SIDE PANELS 50 mm sandwich panel with steel construction,
- Indoor and outdoor 2,5 mm Composite Aluminum covered,
- ROOF 55 mm sandwich panel with steel construction Outdoor 2,5 mm CTP covered.
- REAR WALL ATM CABINE, LEFT WALL Customer entrance door.
- OUTSIDE CORNERS anodized aluminum profile, BODY SAFETY safe rubber pads-kick plate, HIGHNES AND LOCKS stainless steel
- 220 V external input plug + 25m connecting cable
- Personal table and chair for 2+2 persons. Wooden materials
- 42 inch LED TV
- ATM AND ELECTRONIC CABINET ATM machine
- 15U 19-inch rack cabinet
- All electronics control panels, alarm, generator panel, fire-extinguishing system and other installations
- Decorative Led type lighting units
- 10-12 kva standard diesel generator, A/C 12.000 btu – 3 units
- 10 pcs night vision cam. Control panel in driver cabin. NVR recording system, UPS system. Power depending on electrical systems
- 5G MODEM for wireless inter







HEAD OFFICE

Büyükbakkalköy Mah. Yakacık Yolu Sk. No:17
Büyükbakkalköy, Maltepe - İstanbul / TURKEY
Phone : +90 216 347 1000 Fax : +90 216 347 7272

ROMANIA

RN INDUSTRIA AUTO S.R.L. Bld. Dimitrie pompeiu nr. 5-7
Hermes Business Center 2nd Floor Office 215 Bucharest/ROMANIA
Phone : +40 031 860 1300 Gsm : +40 745 636341

ALBANIA

RN AUTO INDUSTRY ALBANIA SH.P.K. Vaqarr,
Behind Konti Castle, Tirana, ALBANIA
Gsm: +355 69 408 8311